



MR. NORM'S



'71 HEMI CUDA STYLE GRILLE FOR 2015 - 2019 HELLCAT, DEMON, RED EYE, R/T SCAT PACK WIDE BODY



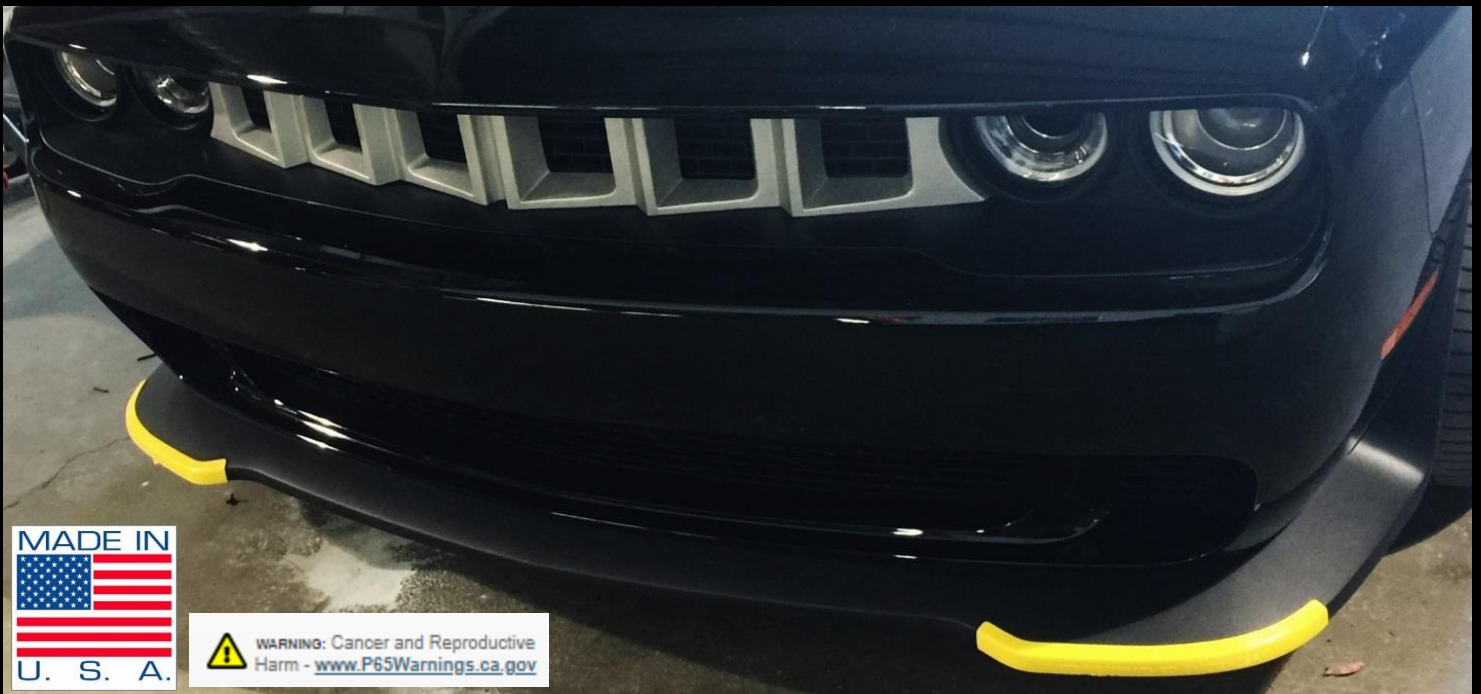
The '71 Hemi Cuda Style Grille debuted on the Mr. Norm's Hellfish Challenger Hellcat at Barret Jackson in Scottsdale

GRILLE INFORMATION

Introducing the new Mr. Norm's '71 Hemi Cuda Style Grille for 2015 - 2019 Challenger Hellcat, Demon, Red Eye and R/T Scat Pack Wide Body models. The Hemi Cuda Style Grille is designed to fit directly over the stock grille without any modifications to your Challenger. Ready for prep and paint, the Cuda Style Grille includes Machined metal mounting brackets, all necessary hardware, 3M Double Face Tape and detailed instructions that make installation fun and easy. Give your Challenger the look of a classic 1971 Hemi Cuda with the new Mr. Norm's '71 Hemi Cuda Style Grille.

PRODUCT MANUFACTURING INFORMATION

Mr. Norm's '71 Hemi Cuda Style Grilles are proudly Made in the U.S.A. from only the highest quality urethane. The '71 Cuda Hemi Style Grille for Challengers is easy to install using simple hand tools.



WARNING: Cancer and Reproductive Harm - www.P65Warnings.ca.gov



**THE '71 HEMI CUDA STYLE GRILLE UNPAINTED IS ONLY \$ 299.00 PLUS SHIPPING
CALL MR. NORM'S AT 760-630-0547 AND ORDER YOURS TODAY!**